

---

# Notation of Pitches Diagnostic Quiz

---

In this quiz, you'll see where you need to practice reading and writing notes in treble and bass clef, including accidentals. Once you've finished the entire quiz, open the Answer Key (found on the website next to this file) and grade your work. If you get a passing score for that section, you can skip that material in the course (though review can never hurt!) If you get a lower than passing score, work through the course material indicated for that section. Watch the videos, do the drills and complete the worksheets to level up your knowledge in those key areas. Be thorough and diligent in your work! A solid grasp of this material is vital to succeeding in your college level music courses.

## SECTION 1) The Treble Clef

**Write the name of each of the following notes.**

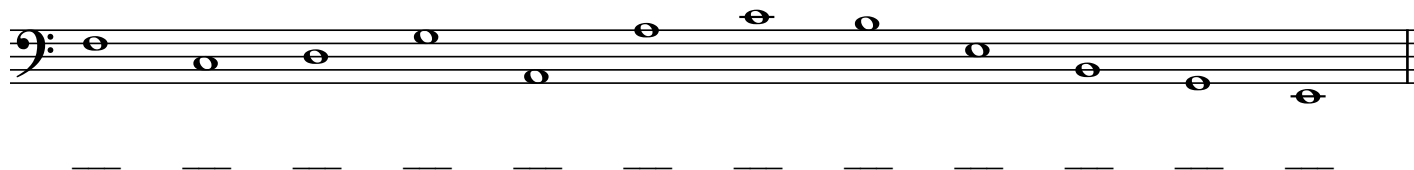
If your score is less than 10 out of 12, work through **[The Treble Clef]** on the course's site.



## SECTION 2) The Bass Clef

**Write the name of each of the following notes.**

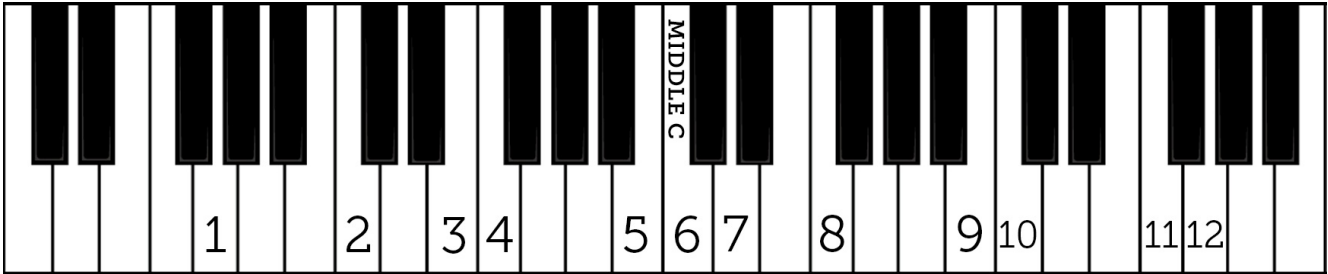
If your score is less than 10 out of 12, work through **[The Bass Clef]** on the course's site.



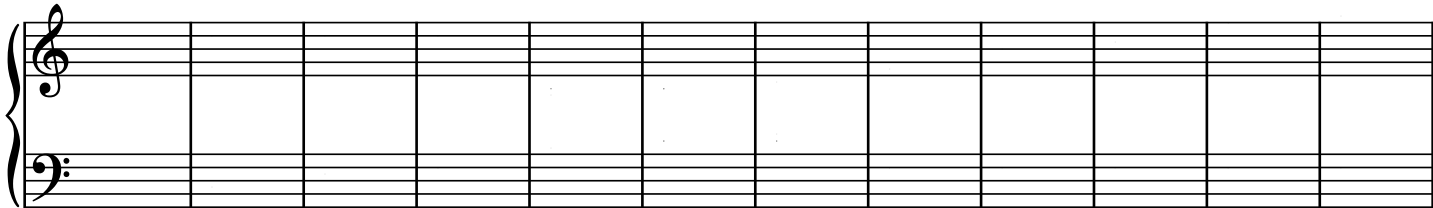
SECTION 3) The Grand Staff and Keyboard Basics

Numbers are placed on a selection of white keys on the keyboard. On the grand staff below, **write the notes that correspond to the keys on the keyboard.** (Example: **If 1. were a D below Middle C on the keyboard, write that D on the Grand Staff under number 1.**) Numbers 5-7 could be in either clef.

If your score is less than 10 out of 12, work through [The Grand Staff and Keyboard Basics] on the course's site.



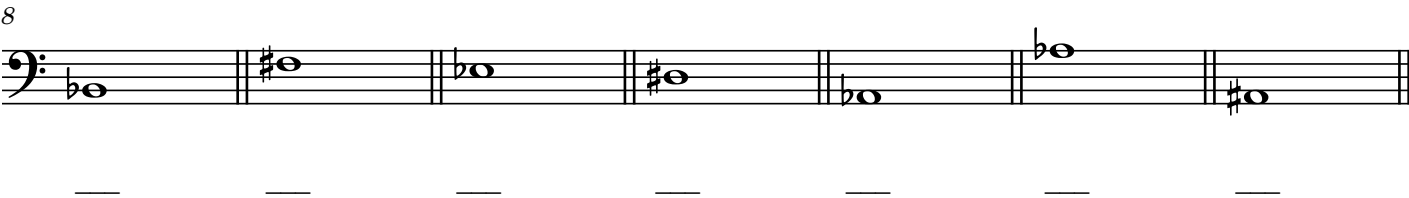
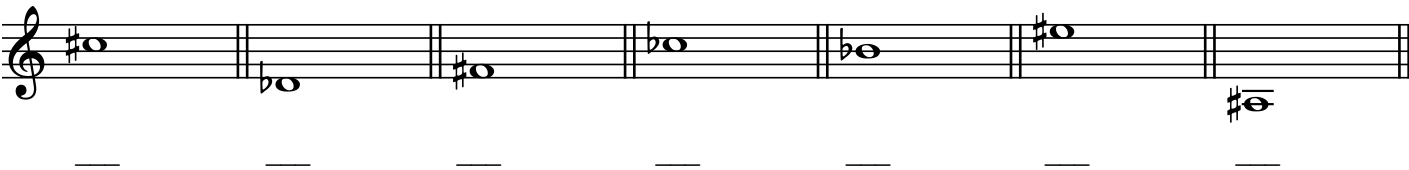
1.            2.            3.            4.            5.            6.            7.            8.            9.            10.            11.            12.



SECTION 4) Accidentals - Sharps and Flats

**Write the name of the following notes.**

If your score is less than 11 out of 14, work through [Accidentals and Enharmonics] on the course's site.



## SECTION 5) Enharmonics

For each note given, write another note to the right of it that is enharmonically equivalent.  
(Don't use double flats and sharps, as fun as they are ;)

If your score is less than 10 out of 12, work through **[Accidentals and Enharmonics]** on the course's site.

